

18 October 2021



Campbelltown City Council
91 Queen Street
Campbelltown NSW 2560

Jemena Gas Networks
(NSW) Ltd
ABN 87 003 004 322

CNR Team
CNR @Campbelltown.nsw.gov.au

Level 14
99 Walker St
North Sydney NSW 2060
PO Box 1220
North Sydney NSW 2060
T +61 2 9867 7000
F +61 2 9867 7010
www.jemena.com.au

**Property: Western Sydney University – Campbelltown Campus
Stage 6 – Narellan Road**

Reference : CNR 13181

Agency Ref: A34529

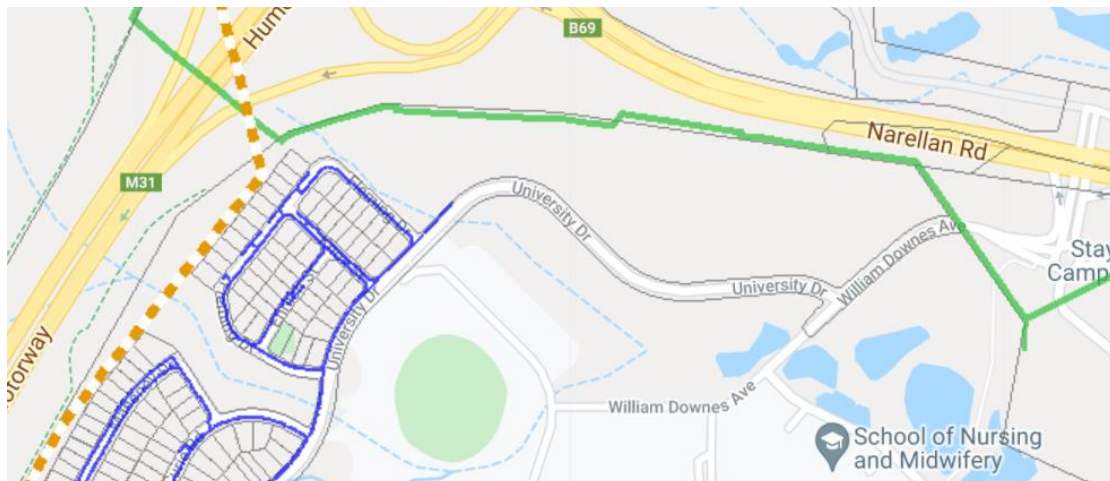
Proposal: 4079/2017/DA-CD Concept application for the staged development of residential, mixed use and open space land uses including Stage 1 for Super lot subdivision and civil works

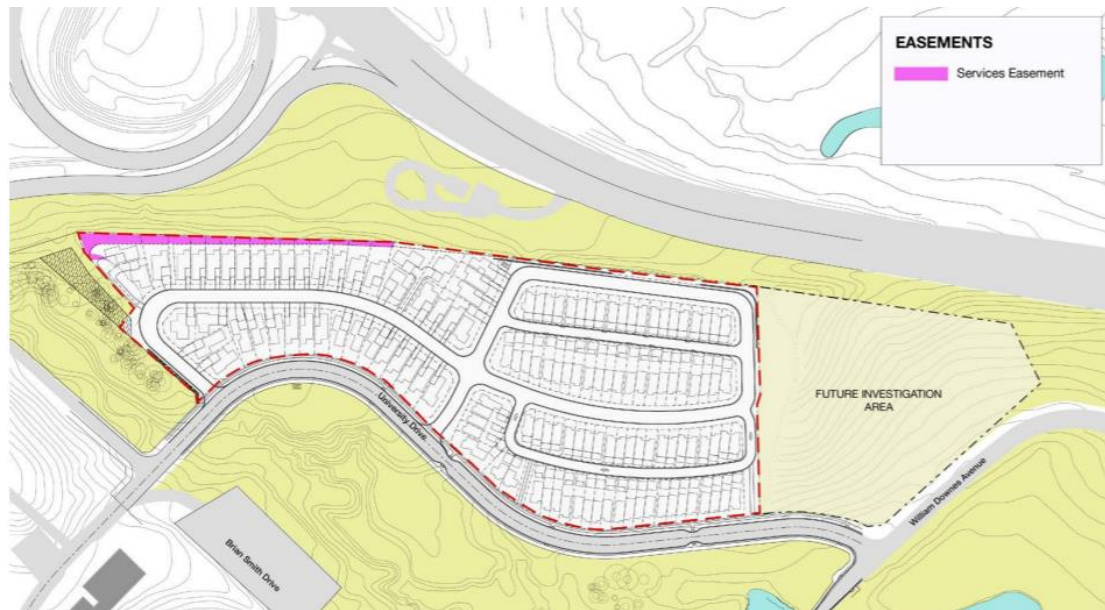
Jemena Asset Management Pty Ltd on behalf of Jemena Gas Networks (NSW) Ltd (collectively Jemena) has reviewed and assessed the DA with respect to safety and impacts on or from the Jemena gas pipelines located to the west of the proposed development.

Jemena confirms that it has no objections to the proposed development application in proximity to its high pressure pipelines.

In pre- assessing the development application, Jemena can confirm that it operates a high pressure pipeline situated approximately 240 metres from the boundary of the development site. Whilst the development site falls within the Measure Length (Zone of Influence) of the high pressure pipeline, the threat of construction activities and the risk to the pipeline and community due to the proposed land usage has been considered by Jemena to be in the acceptable risk level for a development of this nature (see map insert below):

- Eastern Gas Pipeline High Pressure Pipeline (EGP) – Yellow dotted line
- Secondary gas main (Jemena Gas Network - JGN) – Green line
- Low to Medium Pressure Gas Main - Blue line





Secondary Gas Main

The Jemena Secondary gas pipeline traverses within the boundary alignment of Lot 3098 DP1230014 which runs within the intended Service Easement identified within the plan above. Jemena reserves its right to own, operate and maintain its gas main in the existing alignments which runs parallel to water, communication and electrical cabling in the ownership of third party utilities.

Any works proposed within the service easement or within 3 metres of the secondary gas main should be done under supervision of Jemena gas technicians to ensure that the buried gas main is not damaged. Gas main supervision can be arranged via the Jemena gas portal on <http://mygasservices.jemena.com.au>

Eastern Gas Pipeline – High Pressure Gas Pipeline

The EGP is a high pressure pipeline which is a significant gas pipeline that in part, conveys gas to the 'City Gates' and in turn to the Jemena Gas Network (JGN) which provides gas to 1.4 million Sydney and NSW customers.

The EGP asset operates in accordance with Australian Standard - AS2885. AS2885 requires a risk review, Safety Management Study (SMS) of the pipeline operation if applicable where the land around a high pressure gas main/pipeline has resulted in a change in land use and in turn changes the risk exposure to the high pressure gas main/pipeline by introducing additional threats. The proposed activities contained within the Development Application 4079/2017/DA-CD does not constitute a significant change in land use and are considered under AS2885 as being Residential (T1). Jemena is not seeking a SMS to be convened for this development application.

Residential (T1) Land that is developed for community living. Residential applies where multiple dwellings exist in proximity to each other and dwellings are served by common public utilities. Residential includes areas of land with public infrastructure serving the residential use; roads, railways, recreational areas, camping grounds/caravan parks, suburban parks, small strip shopping centres. Residential land use may include isolated higher density areas provided they are not more than 10% of the land use. Land used for

other purposes but with similar population density shall be assigned Residential location class.

NOTE: In Residential and High Density areas the societal risk associated with loss of containment is a dominant consideration.

Low Density Residential (T1) classification of Location Class. Jemena will not require any additional control measures to mitigate external interference that could lead to a gas release.

To provide some greater context to the decision above, the high pressure pipelines operates at pressures greater than 14MPa. Under AS2885 requirements, Jemena takes its rights and obligations under these instruments seriously as they relate to ensuring the ongoing safety and integrity of its mains/ pipelines and the community at large.

Duty of care exists to ensure there is no compromise to the integrity of the Jemena assets during this procedure due to the existing ground conditions that currently exist.

In addition, Jemena has consider the implications of the development adjacent to high pressure pipelines transporting dangerous goods in NSW as communicated in the ISEPP clause 66C and more recently the Planning Circular PS 18-010. Jemena has undertaken a holistic review of the interface between its high pressure gas mains and land use within the heat radiation contours within Sydney's urban growth corridors..

If you have any questions or quires, please do not hesitate to contact the undersigned.

Kind Regards



Luke Duncan
Property Officer
Gas Distribution